



Wakatipu
HIGH SCHOOL

Wakatipu High School **PROSPECTUS 2026**





Wakatipu HIGH SCHOOL

47-49 Red Oaks Drive | Frankton
Queenstown 9300
office@wakatipu.school.nz
03-442 7370
wakatipu.school.nz

Scan here to enrol >



E te tini e te mano, kia ora rā. Anei a whakatipu, e mihi mahana, kia koutou katoa. Takahia mai rā, ko te aroha, mai i kā rika pōwhiri, e tuwhera atu nei, ko Kawarau te mauka, ko whakatipu te roto. Haere mai rā ki tāhuna.

To the many, to the thousands - greetings. Here we are Whakatipu, a warm welcome to you all. Come forth with love, we welcome you all with open arms. Remarkables the mountain, Whakatipu the lake. Welcome again to you all.

Welcome to Wakatipu High School



PROSPECTUS

Contents	
Welcome From The Principal	4
Academic Excellence	6
Curriculum	
> Ākonga Profile	9
> Teaching And Learning	10
Extracurricular	
> Sports And Active Recreation	14
> Arts And Culture	15
> Outdoor Experiences	16
> Student Leadership	17
Wellbeing And Support	18
Recognising Student Success	20
Financial Support	21
Community Support	21
Facilities	22
Attending WHS	23
Useful Information	24

Kia ora - Welcome

Wakatipu High School's vision is to 'deliver Aotearoa New Zealand's best all-round education'. This aspirational vision challenges us to strive to deliver the very best possible opportunities and outcomes for all of our students each and every day.

Our 'Ākonga Profile' (or Graduate Profile) outlines what we want for our students in their time at WHS, and encapsulates the all-round nature of our vision. The Ākonga Profile supports every student to gain their best possible qualification, while developing the essential competencies and knowledge for an ever-changing world, all while growing holistically as a young person. At the centre of the Profile, are our school values of excellence, respect, responsibility, resilience, and inclusion.

Integral to the Ākonga Profile and our vision is student engagement, learning, progress and achievement for all students, and our strong academic results are testament to our success in this area. Students are also supported to achieve in vocational pathways, which include our Trades Academy, Gateway and LEAP programmes. In addition, we have a range of learning supports available including for literacy and numeracy, and we have a strong Gifted Education programme.

A key part of our all-round education is the wide range of extra and co-curricular opportunities that we offer, including in sport, arts, music, culture, outdoors, community, service and leadership. From our rowing, to our jazz band, school musical, Kapa Haka group and Duke of Edinburgh programme, our students have an incredible range of opportunities in which to participate and excel, as well as to grow and develop as young people. Furthermore, the Wakatipu Basin and its unique environment enables us to offer our great Outdoor Education programmes from the junior to the senior school, including our Greenstone camp for Year 9 students and our iconic Branches camp for Year 10 students.

Student wellbeing and resilience are very important at WHS, and we work hard to support our students to 'feel good and function well', to enjoy coming to school, but also to understand that sometimes things are hard and that we need to build strategies for working through times of challenge. We have a comprehensive pastoral system, central to which are our five Houses - Arthur, Duncan, Fox, Hay and Mackenzie. Additionally, we have a school-wide wellbeing programme and a range of activities and supports to ensure all students feel safe, included and a sense of belonging at all times.

Our world class facilities support and enable students to achieve their potential no matter their passion. Our students and staff strive to live the Wakatipu Way and we have a strong sense of pride in our school and our community.

Well-governed and very generously supported by the WHS Foundation, Branches Trust and the community, Wakatipu High School is delivering on its vision of Aotearoa New Zealand's best all-round education.

We welcome you to join us at our remarkable campus and to 'reach for your heights'.



Oded Nathan

Oded Nathan
Principal / Tumuaki



ĀKONGA PROFILE



Excellence



Respect



Responsibility



Inclusion



Resilience



Our vision is to deliver Aotearoa New Zealand's best all-round education



Ad alta
Reach for your heights
Kā mauka whakatipu

Academic Excellence

WHS prioritises student engagement, learning, progress and achievement, which consistently yields excellent academic outcomes for all students.

We encourage and support our students to achieve their best possible qualification. Our NCEA Level 2 and University Entrance (UE) results in recent years have placed us among the top co-educational schools in Aotearoa New Zealand.

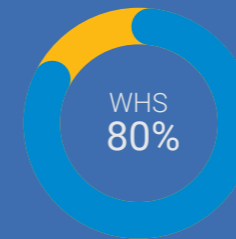
Our teachers focus on high-quality teaching and learning, including differentiated instruction for all students. With a focus on high performance, we support students in achieving Merit and Excellence endorsements, as well as Scholarships. We have rigorous systems in place to monitor and support our ākonga to reach for their heights and achieve their full potential

“ Strategic and effective leadership drives improvement to systems, processes, teaching, and learning which support best outcomes for learners; key conditions that underpin successful schooling are strongly embedded and well-aligned.”

- 2024 Education review office (ERO) report

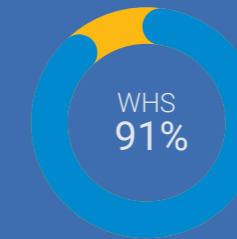
2024 Academic Results

Once again, WHS 2024 academic results were in the top 10 in NZ for all public co-ed schools in each of its key indicators and notably, the school ranked second nationally among public co-ed schools for University Entrance.



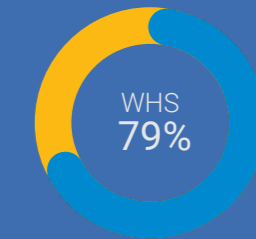
Achieved NCEA Level 1

The national average was 46% and the average for the Otago region was 70%



Achieved NCEA Level 2

The national average was 74% and the average for the Otago region was 85%



Achieved University Entrance

The national average was 51% and the average for the Otago region was 63%

High Performance

Level 1



Achieved Merit and Excellence Endorsements

The national average was 18% and the average for the Otago region was 33%

Level 2



Achieved Merit and Excellence Endorsements

The national average was 29% and the average for the Otago region was 39%

Level 3



Achieved Merit and Excellence Endorsements

The national average was 28% and the average for the Otago region was 32%

Scholarships



Top 5 in the Otago region and over \$890,000 in Tertiary Scholarships awarded



He waka eke noa

The Wakatipu Way

Ahakoia he iti he pounamu



Pride
Whakahī

Valuing the school and its people

• We celebrate our successes

• We represent the school positively

• We wear our school uniform correctly



Excellence
Panekiretanga

Striving to achieve our personal best, in everything we do

- > We do our best
- > We set and work towards personal goals
- > We challenge ourselves

Respect
Te whakaute

For self, others, WHS, and the environment

- > We follow instructions
- > We use appropriate language
- > We take care of our school
- > We show our thanks

Responsibility
Takohanga

Choosing our responses, and being accountable for our decisions, actions and consequences

- > We own our actions
- > We are organised and use our time well
- > We look out for others

Resilience
Te manawanui me te ū

Being able to cope with and grow from challenge

- > We believe in ourselves and others
- > We keep trying even when things are hard
- > We seek help when we need it
- > We actively manage our wellbeing

Inclusion
Kotahitanga

Actively welcoming, including all and creating a safe environment

- > We are kind and considerate
- > We listen to and value others
- > We support others to belong

Ākonga Profile



Central to our vision of delivering Aotearoa New Zealand's best all-round education is our Ākonga Profile. The Ākonga (Learner) Profile outlines the areas in which we want our students to learn, develop and grow during their time at WHS. The profile is very holistic and has four key areas:

1. Values - excellence, respect, responsibility, resilience and inclusion are at the centre of the profile.
2. Future-focused qualifications, transitions and pathways - including the best possible qualification for each student.
3. Capabilities for lifelong learning - including competency development and key knowledge, skills and processes.
4. Holistic development - including self, social and active citizenship.

In Year 9, our students experience the eight learning areas of the New Zealand Curriculum, choosing subjects that allow them to explore their passions while building a strong foundation for senior school success. As students progress, they increasingly specialise within their chosen subjects and pathways. Our broad range of subject choices for both junior and senior students is designed to cater to diverse interests and needs.

We also provide comprehensive support through literacy and numeracy programmes, ESOL classes for second language learners, talent development initiatives, dedicated scholarship support, and extension and accelerated learning opportunities across all learning areas.

Aligned with our Ākonga Profile, our students also learn and grow through our wider school curriculum. Our extensive extra and co-curricular programme, which includes sports, arts, cultural activities, outdoor education, community service, and leadership opportunities, alongside our vibrant House competition, all provide valuable avenues for our ākonga to learn, grow, and develop holistically.

Teaching and Learning

Our team of talented, passionate, and experienced staff are dedicated to ensuring there is high-quality teaching and learning at WHS, including making the most of our flexible learning environment.



Teaching and Learning Model

Our teaching and learning model outlines the guiding principles for high quality teaching and learning which are underpinned by research on what matters most for our students and their learning. These include:

- > Whakawhānaukatanga - creating a class climate and culture conducive to learning;
- > Wānanga - growing great learners who love to learn and learn to learn;
- > Kaitiakitanga - high quality teaching for equity and excellence. The school supports staff to engage in ongoing and up-to-date professional learning to ensure students receive world-class learning experiences.

WHS Learning Environment

WHS's Learning Environment provides flexible learning spaces, which paired with technology, enable teachers to choose from a variety of pedagogical approaches to enhance teaching and learning. They support students to develop future-focused skills and competencies for lifelong learning, while engaging in a knowledge-rich curriculum.

The flexibility of our spaces enables teachers to deliver personalised learning, better meeting the needs of individual students. Personalised learning is supported through leveraging digital technology, with students bringing their own devices to school (BYOD) and using them as tools for learning.

Timetable and Ako Time

Our timetable is founded on the knowledge that student choice is fundamental to engagement, which in turn supports learning, progress and achievement.

Students in the junior school (Years 9 and 10) select 12 classes per year - with six classes running in Semester one (Terms 1 and 2) and six in Semester two (Terms 3 and 4). Senior students (Years 11-13) select up to six classes per year - with each class running the whole year.

Time for each class totals seven and a half hours over a two-week period with three 60 and three 90 minute periods over that period.

Ako time is an opportunity for students to meet with their Kaiārahi (learning advisors) for academic guidance and support. Ako time also provides students with the opportunity to develop their self-management and to work independently.

Learning Support

Our student learning support team consists of specialist teachers and coordinators to support all students. We offer support for:

- > Literacy and numeracy
- > English for second language learners
- > Special assessment conditions
- > Special education needs
- > Gifted learners
- > Distance learning

Supporting students to achieve their "Best Possible Qualification"

Course Options

Subject selection for Year 9 starts with an Enrolment and Open Evening in June. The evening is for parents and students to get an overview of the school and our course option selection process.

In selecting course options and deciding on course of study, students need to consider and balance their interests, passions and strengths with their potential future and pathway, while keeping their options open and ensuring they get the essential skills and knowledge for the future.

Junior students take twelve, half-year options per year. In Year 9, they take a full year of English, Mathematics and Social Science, and compulsory half-year courses in Health & Physical Education and Science. They can then choose an option each from Arts, Languages, Technology and one other Learning Area.

In Year 10, they take a full year of English, Mathematics and Science, and compulsory half-year options in Health & Physical Education and Social Science. They can then choose four more options to suit their pathway and passions.

In the senior school students study six full year subjects towards their NCEA qualification. In Year 11 this includes compulsory English, Mathematics and Science and in Year 12, students are required to complete English.

Pathways To The Future

We offer the National Certificate of Educational Achievement, the main qualification for secondary students in New Zealand. NCEA comes in three levels: Level 1, Level 2 and Level 3 which students usually work through from Years 11 to 13.

NCEA is well recognised by employers, and used for selection by universities and polytechnics, in New Zealand and overseas.

Our Year 10 students sit the NCEA corequisite exams for Literacy (Reading and Writing) and Numeracy and are

We offer a broad range of subjects with specialist teachers taught in specialist spaces. We also have options for students to study by distance learning and personalised courses to pursue areas of interest. Browse our subjects and find out more about our course options at wakatipu.schoolpoint.co.nz

English

- > English
- > Media Studies

Arts

- > Music
- > Design
- > Painting
- > Photography
- > Performing Arts
- > Drama

Health & Pe

- > Health Education
- > Physical Education
- > Outdoor Education

Languages

- > French
- > Japanese
- > Te Reo Māori
- > Spanish
- > Other Languages by Correspondence

Mathematics

- > Mathematics
- > Calculus
- > Statistics

Science

- > Biology
- > Chemistry
- > Physics
- > Earth and Space Science
- > Horticulture and Agriculture

Social Science

- > Social Studies
- > Commerce
- > Economics
- > Business Studies
- > Geography
- > History
- > Tourism
- > Psychology
- > Digital Technology
- > Food Technology
- > Hard Technology
- > Design and Visual Communications
- > Hospitality

provided with further opportunities to achieve their corequisites in the senior school, if required.

Students are assisted each week in their Ako time to plan pathways and achieve their goals. Their Kaiārahi regularly checks that they are meeting these objectives.

Our Careers team starts to work with our students in Year 10 and meets with senior students to discuss their goals and explore tertiary and job opportunities available for them.

In Year 13 students visit selected New Zealand universities for Open Days to enable them to make informed choices.

In 2026, we will be piloting the IGCSE (Cambridge) curriculum in Mathematics, English and Science with a group of Year 10 students to ascertain whether this qualification system might better meet the needs of some students. This pilot will be a two year programme.

“Students experience meaningful and intentional teaching, where the classroom culture is well established to support their learning.”

- 2024 Education review office (ERO) report



Reporting

Our digital reporting system is frequent, regular and 'in real-time'. Each week, parents and students will receive their Learning Engagement (LE) indicators, which provide an overview of a student's engagement and effort and indicate whether they are living the Wakatipu Way in each of their classes.

We also use the online Portal to provide parents and students with real-time feedback and feed-forward (next steps) on students' learning, progress and achievement.

Senior students and parents receive regular information in each of their classes as to how students are tracking towards their NCEA Qualification and the academic goals they have set for themselves.

We have regular opportunities for students and parents to meet with their Kaiārahi and subject teachers in person.

Furthermore, Kaiārahi provide mid-year and end-of-year comments summarising students' academic achievement, engagement, extra and co-curricular involvement, as well as an overall summary in relation to student citizenship.



Next Steps Evenings

Our teachers work closely with parents and students to support students with their academic achievement and holistic development. In the junior school, our parents have the opportunity to meet Kaiārahi at 'Junior Next Steps' evenings, which are personalised parent-student-teacher meetings and are held twice throughout the year - once per semester.

In the senior school there are two opportunities (term 2 and 3) to meet with individual subject teachers where parents and students will receive quality feedback on academic learning, progress and achievement and next steps for learning in that subject. There is also an opportunity to meet with Kaiārahi early in term 3 for a holistic

discussion on academic achievement and holistic development, and what next steps might need to be taken to achieve a student's goals for the remainder of the year.

Extracurricular



“Wakatipu High School is a place of growth, diversity and excellence. Our proud school community creates and supports a culture that drives students towards their potential. I feel privileged to be part of this community.”

- McKellar Thornton Head Student 2025





WHS 2025 Musical "Mamma Mia"

Sport and Active Recreation

We have a well-resourced sports programme that provides all students with the opportunity to participate, develop, perform and excel in their chosen field.

Our Vision for Sport is to grow better people through sport and active recreation. The school prides itself on a high participation rate and an inclusive approach that enables students to grow holistically, connect with others, enhance wellbeing and have fun.

The Sports Department enables student participation, development and performance pathways in a wide range of sports. Our students are engaged in nearly 40 different sport and active recreation opportunities throughout the year.

A number of sports are delivered at school, while others are offered in conjunction with local clubs. Our students compete in competitions and tournaments locally, regionally and nationally, and our unique location creates opportunities to compete against a number of New Zealand and international touring schools. Each year we have winter sports exchanges with James Hargest High School and Mount Aspiring College.

Over the years we have had multiple athletes succeed on the national and international stage in a variety of sports, including at the Youth Winter Olympics and World Cup Snowsports events. Recently we have experienced significant success nationally and internationally in rowing, mountain biking, athletics, tennis, golf, cricket, adventure racing, ice hockey, cross-country, snow sports and more. Our student-athletes are well supported by staff to pursue their sporting ambitions and manage their academic demands successfully. WHS also offers the American education SATs for students interested in attending college in the USA.

Sporting excellence at WHS is widely celebrated in the annual summer and winter sports assemblies and at our prestigious Sports Blues Awards night.

Find out more at sporty.co.nz/wakatipu



Follow us on Facebook: [@wakatipuhighschoolsport](https://www.facebook.com/wakatipuhighschoolsport)



Arts and Culture

We offer an extensive Arts programme through our visual arts, music and drama departments, along with a vast range of curricular, extra and co-curricular opportunities.



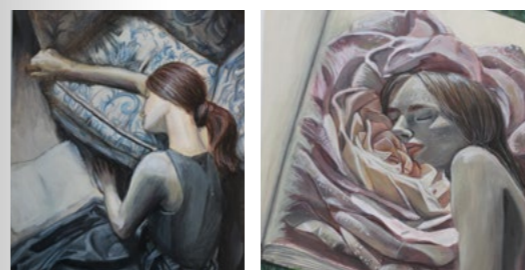
YAMI Showcase



Jazz Band



2024 Showquest



Harriet Blundell Scholarship Painting



Samuel Muir, Scholarship Photography

Participation and excellence in all areas of the Arts is encouraged with subjects offered from Year 9 through to Year 13. We support our teaching programmes with visiting artist/performer workshops and involvement in community events.

Music

Our students participate and achieve in a range of activities that include jazz bands, rock bands, our annual Musical, and songwriting events. We have gained national awards in songwriting, competed in the finals of the Rockquest competition and gained gold gradings at the annual Blenheim Jazz competition. There are a number of local events and venues where our musicians are able to perform and showcase their skills. We are extremely fortunate to have the support of local organisations such as Te Atamira, Rockformation, Turn Up the Music, and The Whakatipu Youth Trust. Students who are enrolled in Music classes are offered itinerant music lessons which run during school hours.

Visual Arts

Our dynamic Visual Arts department offers students a rich selection of courses including Printmaking, Painting, Design and Photography. The culmination of students creative endeavours is proudly displayed throughout the year in local exhibitions, highlighting the exceptional calibre of student work. We take pride in recognising our senior students' accomplishments, as they annually secure numerous Scholarships in Photography, Painting and Design. Our Art department's focus is on guiding each student towards creating art that holds significance to them personally while continuing to develop conceptual ideas.

Drama and Performing Arts Technologies

Drama has considerable involvement in a range of activities including the One Act Play festival where they have achieved highly in recent years. At Years 11, 12 and 13, Drama students produce and perform high-quality dramatic pieces to small live audiences where there is a focus on NZ Theatre. Every year, we produce a successful school Musical involving a number of students from all levels of the school covering a range of areas in the Performing Arts. The Senior Performing Arts classes are involved with local theatre group productions such as Showbiz, Remarkables Theatre, and Whirlwind Productions. They also work with local companies such as Tom-Tom Productions and Soundpeople.

Dance

Dance is an exciting part of our department, with opportunities expanding as more students get involved. We've been proud to host workshops from professional companies such as The Royal New Zealand Ballet and Footnote, giving students a chance to learn from some of the best in the industry. As interest continues to build, curricular, extra and co-curricular opportunities flourish. Our students excel in our musicals dance troops, Showquest and community dance groups.



Year 9 Greenstone Camp



Branches Camp



Snow caving trip



Clutha kayaking trip

Outdoor Experiences

Outdoor Education provides students with excellent opportunities to grow holistically, including personal and social development, as well as opportunities for learning new skills and having fun in the outdoors.

WHS has a junior Outdoor Education programme based in our surrounding environment. Year 9 students participate in a river-based Outdoor Education camp at Greenstone Station early in Term 1, where they spend 3 days camping in tents on the farm while learning about river safety (river crossing, river swimming, kayaking), day tramping (Lake Rere) and developing relationships in their House groups. Greenstone Camp sets the scene for our students to become connected to the "Wakatipu Way".

The iconic Year 10 Branches Camp has been running for over 55 years and takes place at the end of Term 4. Based at Branches Station, at the head of the Shotover River, students participate in outdoor activities including the Lochnagar tramp, rafting the Upper Shotover River, overnight search & rescue and campcraft. Branches is often one of students' most memorable experiences from Wakatipu High School.

We also offer an outstanding Outdoor Education course for senior students,

making the most of the surrounding environment of the Wakatipu. Year 12 and 13 students gain experience and credits in kayaking, tramping, bushcraft, mountain expeditions, snow caving and safety management. Highlights include tramping up the Rockburn Valley, kayaking the Clutha River and at Kawareau Falls, and participating in mountain expeditions on the Remarkables.

Student Leadership

Providing opportunities for developing student leadership is very important at WHS. Student Executive positions are Head and Deputy Head Students as well as Lead Prefects who chair various student council groups, composed of students from all year levels.

In addition to the Student Executive, House Leaders and Deputy House Leaders lead the Houses in a series of competitive House events throughout the year. House Leaders also assist with organising and leading students, developing house spirit and leading with House assemblies.

We also run morning sessions with guest speakers from around the country for current and aspiring leaders.

Student Councils

- > Academic
- > Arts & Culture
- > Community and Service
- > Environmental
- > Multicultural
- > Junior
- > Māori and Pasifika
- > Sports
- > Support (Whanaungatanga)
- > Wellbeing

Peer Mentors

Year 12 and 13 students can apply to take part in our Stars mentorship programme and assist new entrant students with a successful transition to high school. Stars is a national programme supported by the Graeme Dingle Foundation.

As part of this initiative, senior students are trained to be Peer Mentors and follow a structured programme that develops essential life skills. These include goal setting, time management, effective communication, and building positive relationships — equipping them to be strong role models and compassionate leaders within our school community.



House Competitions

Our inter-House competitions are a vibrant part of our school culture and an important feature of the school calendar. They give our students a sense of belonging and provide an opportunity for social interactions and a bit of friendly competition throughout the year.

The Student Councils are responsible for organising these events which kick off with Participation Day early in the year and includes a range of activities

from the arts, sports, cultural and academic areas of the school such as our annual Matatū' (haka and waiata) competition, debating, netball and much more. Points are awarded at each event, contributing to the award of the House trophy at the end of the year.



Duncan House was awarded the House trophy in 2024



WHS Winter Sports Academy

For over a decade the WHS Winter Sports Academy has been an important programme enabling aspiring young athletes to pursue sporting and academic excellence. Participants in the Academy's programme train in their chosen alpine, free skiing or snowboarding disciplines with expert coaching at one of the local mountains.

This high performance academy allows for a flexible academic schedule to allow students to reach their maximum athletic potential while pursuing their academic goals. Some of our top snowsports athletes have gone on to represent New Zealand at the highest level including former students Ruby Andrews, Tiarn Collins, Cool Wakushima and Alice Robinson.

Wellbeing and Support

Wakatipu High School aims to keep student wellbeing at the forefront of all that we do, believing that students cannot learn or achieve their potential without a strong sense of wellbeing.

While there are multiple ways to conceptualise and measure wellbeing, Felicia Huppert's definition 'feeling good and functioning well' provides a succinct definition of what wellbeing is and it's a shared language that we like to use. It is useful to note that this definition doesn't necessarily mean that we're happy all the time and doesn't mean that we won't experience tough times. In regards to resilience, it isn't about being bulletproof, it's being able to cope with and grow from challenge.

Our pastoral support team and Kaiārahi, alongside our school-wide wellbeing plan is central to us supporting students here at school.

School-Wide Wellbeing Plan

Through our school-wide wellbeing plan we focus on the concept of positive education. We teach specific skills that assist staff and students to build up their kete of resources in order to strengthen their relationships, build positive emotions, adopt a strengths-based approach, enhance personal resilience, promote a growth mind-set and encourage a healthy lifestyle. Ultimately we aim for students and staff to have an understanding of wellbeing, to be

able to use our wellbeing model to make positive changes, and to regularly check in with their wellbeing and get support if needed.

Pastoral Support

Central to pastoral care at WHS is our House system. We have five Houses, each with a different colour, whose names come from early settlers in the Wakatipu Basin: Arthur, Duncan, Fox, Hay and Mackenzie. The Houses create a sense of whānau, where all students feel a sense of belonging, are cared for and are mentored and supported. Deans are the head of each House and in conjunction with the Kaiārahi, are responsible for the overall welfare of all students in their House. This role includes guidance and discipline, as well as encouraging student leadership within the House. Each House is further divided into their Ako groups - which are based on year level - and meet three times per week.

Kaiārahi and Ako Time

When a student first starts school they are placed in an Ako group within their House and remain in the same Ako group for their time at WHS.

Each Ako group is led by a Kaiārahi (learning advisor) who is responsible for caring and supporting students to reach for their heights. Kaiārahi track, monitor and mentor students to learn, progress and achieve, while also looking after their holistic wellbeing and all-round education.

The Kaiārahi is the primary support person for students and families. They connect with them from day one, and regularly meet with students throughout the week at Ako time.

Kaiārahi is your student's key support person at school



Guidance Counselling

Guidance counselling provides an opportunity for students to talk confidentially about problems and concerns in a safe place. Our Guidance Counsellors listen without judging or criticising, to help find out the cause of problems and to help students move forward from the situation they may find themselves in.

They regularly play a key role in planning and implementing programmes and services to enhance student wellbeing and work towards reducing barriers to a student's progress.

Counsellors are able to work alongside families towards supporting our students and work closely at times with external agencies, to ensure families and students are able to access the resources available within our community.

Find out more about our Guidance Counsellors at wakatipu.school.nz/guidance-support

Careers

The Careers Department provides support and assistance to students with their ongoing career journey. This includes course planning, scholarship information, assistance with job and tertiary education applications, apprenticeships, work exploration and/or transitioning to work, STAR and Gateway programmes, CV writing and more.

Career Education opportunities are promoted to all students through a range of mediums such as the Careers Department website, school newsletter, Google classrooms, Kaiārahi and where appropriate targeted emails.

Some opportunities include:

- > University and polytechnic open days, careers events and information evenings
- > Presentations from the defence forces and employers
- > Employment exploration, exposure and experience
- > Holiday courses
- > Career information visits

Student Services

Student Services is a dedicated student help desk for students who have a question or need help.

Visit Student Services for:

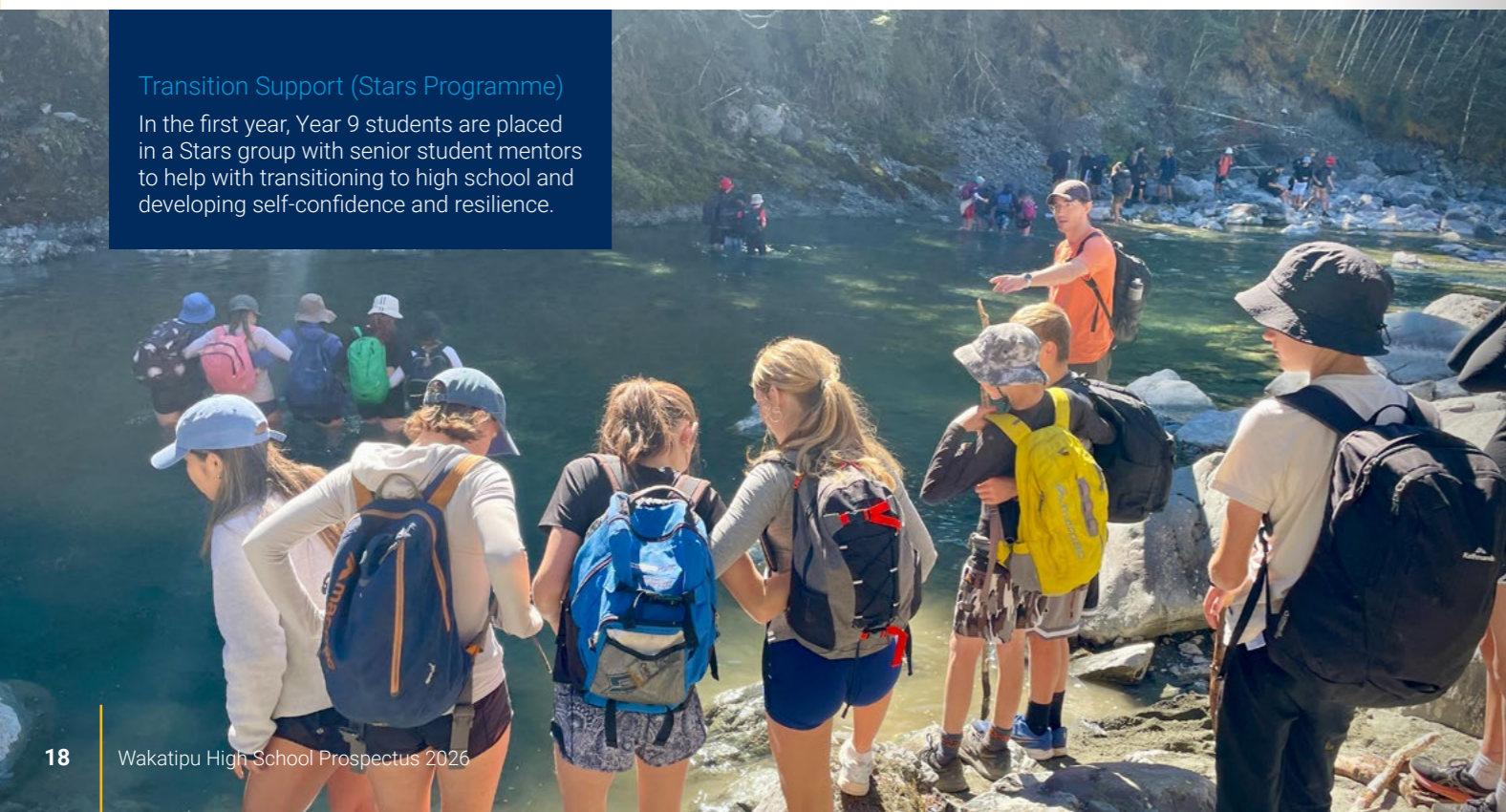
- > IT support
- > Guidance Counselling
- > Pastoral support from the duty Dean
- > Health nurse
- > Pay fees
- > Career Counselling

Health Nurses

Students also have free access to a registered Health Nurse who visits the school twice a week.

Transition Support (Stars Programme)

In the first year, Year 9 students are placed in a Stars group with senior student mentors to help with transitioning to high school and developing self-confidence and resilience.





RECOGNISING STUDENT SUCCESS

Celebrating the mahi, effort and achievement

Assemblies and Prizegivings

We hold whole school, year level House assemblies and prizegivings throughout the year to celebrate the hard work and effort of our students both for their academic achievements and all-round success.

Our annual Cultural Blues and Sports Blues Award evenings are important events at WHS to celebrate excellence,

achievement, service and leadership across all areas of the Arts and Sports.

Our end of year prizegivings are our most prestigious events to honour our top scholars with special prizes and scholarships. The highest of which is the Dux award (top scholar) and the Proxime Accessit (runner up to the Dux).



2024 Dux - Harry Seeto

Excellence/Ad Alta Awards

Excellence awards acknowledge student's achievements in NCEA. They are awarded to students who have achieved more than 50% of their internally assessed credits to the Excellence level. Achieving this award requires a commitment to learning and achievement to the highest level.

An Ad Alta Award recognises senior students who exemplify the Wakatipu Way and is calculated from the weekly Learning Engagement indicators.

Students can achieve a bronze, blue and gold badge throughout the year. Achievement at these levels are celebrated during the year at our Excellence and Ad Alta Assemblies.

Ākongā Passport

The Ākongā Passport is a two-year program designed to encourage and recognise Year 9 and 10 students for their active engagement in school life and exemplifying our school

values. Aligned with the Ākongā Profile, the passport supports students to strive to fulfil our vision of a great all-round student by setting and achieving personal goals across a range of areas aligned with the Ākongā Profile.

Throughout years 9 and 10 students earn points for

- > Exemplifying WHS school values
- > Maintaining strong Learning Engagement Reports
- > Participating in extra and co-curricular activities
- > Demonstrating high levels of attendance
- > Engaging in service and leadership opportunities
- > Setting and achieving specific Ākongā Passport goals

Student Badges

Our student badge scheme recognises participation and achievement in our great all-round education. Students are encouraged to engage in a range

of opportunities and "reach for their heights".

We award badges for participation and excellence in

- > Academics
- > Leadership
- > Service
- > Sport
- > Art
- > Culture
- > Extracurricular Activities

We encourage students to build on their badges through their time at WHS to foster a sense of pride.



Financial Support

Āwhina Fund

'Āwhina' means to nurture or support, and the Āwhina Fund is used for a wide range of things which families may struggle with financially, including uniform, laptops, school trips, educational assessments and even some extracurricular activities. Funding is in partnership with families and their

ability to contribute. The Āwhina Fund is very generously funded by the WHS Foundation.

Learn more about Āwhina wakatipu.school.nz/awhina

Community Support

WHS Alumni

Wakatipu High School benefits from a strong and supportive community, which includes our active Alumni network. This network connects past students, fostering a sense of belonging and providing ongoing support to the school

> [Stay connected and learn more at whsf.nz/alumni](http://whsf.nz/alumni)

WHS Foundation

The WHS Foundation was founded in 2013 to support Wakatipu's only High School to provide the best all-round education for Wakatipu youth. The WHS Foundation has a vision for all WHS students to be enabled to meet their potential in a supportive and well-resourced environment. Thanks to the generosity of our community, the WHS Foundation has provided more than \$2 million for programmes at the school and in 2025 a further \$540,000 is being invested in the future of WHS students.

The WHS Foundation funds initiatives that:

> [Enable WHS students to Reach for their Heights](#)

Supporting WHS to deliver the best possible opportunities for Wakatipu youth so they leave high school with the confidence to pursue their goals.

> [Support Inclusion](#)

Supporting initiatives that ensure students have equitable access to a great all-round education and extra-curricular opportunities through programmes such as the Āwhina Fund.

> [Support Wellbeing](#)

Funding programmes that support student and staff wellbeing as well as build resilience and respect for themselves, others, and their community.

The WHS Foundation has a well

established business partnership programme which is integral to their ability to support the school to reach for their heights. The programme offers tiered levels of corporate sponsorship for any business looking to make a meaningful contribution to support Wakatipu High School.

The WHS Foundation is a key support for the school in its ambition to deliver Aotearoa New Zealand's best all-round education.

> [Learn more about the Foundation, including how to support and help with fundraising initiatives at whsf.nz](#)



The WHS Foundation has a well

Branches Trust

Branches Trust was formed in 2009 to help fund our Year 10 Branches Camp and ensure that this significant Wakatipu High School opportunity is accessible to all students and families.

With changes to education and funding over that period their very generous support remains as important as ever in supporting us to be able to run a safe, high quality Branches Camp.

Learn more about Branches Trust at branchestrust.co.nz



Facilities

Our Campus

Our world class facilities include a multi-purpose theatre space, two gymnasiums (including a double and single gym), outdoor gym circuit, specialist learning spaces, purpose built science laboratories, a musical rehearsal and a recording studio. The campus was designed and built in accordance with the principles of an Innovative Learning Environment (ILE), encompassing Flexible Learning Spaces as an integral part of learning.

The school is built for 1625 students and includes onsite student facilities such as a cafe, fitness studio, climbing wall, and outdoor basketball courts as well as student social spaces.

Library

The library is a warm comfortable space for students to read, research, study and print their work. During the breaks, students can use jigsaw puzzles and board games. Some groups (such as the Chess Club) meet in the library. Staff are available from 8.15 am to 3.45pm so that students can borrow books, computers, and cameras; and so that students can get help with their work. The library also has an online presence via the school website, a blog page and an ebook borrowing platform.

Cafe

WHS has a school cafe open during break time for students to purchase a healthy lunch. There are two cafe service points, one for senior students and one for junior students. The cafe is cashless; however does offer the option to have money on account for spending at the cafe only.

Uniform Shop

NZ Uniforms is our uniform supplier who operate a retail outlet in Remarkables Park, a short walk from the school. The retail store is open six days per week and has onsite staff knowledgeable with our school uniform requirements. NZ Uniforms offers a Uniform club option which allows families to save up throughout the year for your students uniform and also offers a VIP discount in-store on uniform accessories.

> For more information visit:
wakatipu.school.nz/uniform-shop
wakatipu.nzuniforms.com

Attending WHS

BYOD and ICT

Digital technology plays an important role in teaching and learning at WHS. All students are required to have a laptop to assist with their learning. As a Bring Your Own Device (BYOD) school we actively encourage our students to use and manage digital technology confidently and competently.

For more information on BYOD requirements please visit wakatipu.school.nz/byod, please note that our network works optimally with Windows devices and Chromebooks are not compatible with our network.

Students must bring their laptop to school fully charged every day as there are no dedicated charging outlets for student laptops.

We have an IT technician who is onsite each school day and who can help facilitate students connecting to the network and any connectivity issues. Note that the IT technician will not assist students with hardware related issues.

Buses

WHS operates a 'mixed model' of school transport for our students. This means some WHS students use public buses, (and must pay student fares to and from school), and some use the Ministry of Education provided free bus transportation, depending on the area in which they live. Our website has additional information around eligibility and routes.

wakatipu.school.nz/buses

Newsletter

WHS publishes a weekly newsletter during term time to communicate with parents and our wider community. Read our newsletter to stay up to date with all the latest news, updates, events, and information about WHS.

WHS Szapp

We use SchoolZine SZApp to communicate school alerts, student notices and our weekly newsletter. The App also features an absence form, the school calendar and some other handy links.

Our App can be downloaded on mobile devices from the Google Play and Apple Stores by searching for SZApp.



Wakatipu High School is more than just a place of learning, it's a space where passions are discovered, leadership is grown, and individuality is celebrated. All the challenges, opportunities, and connections have paved the way and shaped who I am today. To the future students: embrace the journey of Wakatipu, because before you know it, high school will come to an end, and you'll be heading out into the world on your own.

– Manuella Sanches Pedrosa,
Head Student 2025





Key Dates

Tue 17 Jun 2025	Open Evening for new entrants
Mon 04 Aug 2025	2026 Course selection form due
Fri 14 Nov 2025	2026 New Entrants Orientation day
Tue 27 Jan 2026	First day for Year 9 students Orientation for all new students

Term Dates 2026

TERM 1: Monday 26 January to Thursday 02 April

TERM 2: Monday 20 April to Friday 03 July

TERM 3: Monday 20 July to Friday 25 September

TERM 4: Monday 12 October to Thursday 10 December

Useful Links

About Us

- wakatipu.school.nz/our-school

Strategic Plan

- wakatipu.school.nz/our-school

News

- wakatipu.school.nz/school-news

School Contacts

- wakatipu.school.nz/our-staff

ERO Report

- ero.govt.nz/institution/374/wakatipu-high-school

WHS Foundation

- whsf.nz

Branches Trust

- branchestrust.co.nz

Enrolment

- wakatipu.school.nz/enrolment

Course Option Selection

- wakatipu.schoolpoint.co.nz

Attending WHS

- wakatipu.school.nz/buses

- wakatipu.school.nz/uniform

- wakatipu.school.nz/byod

- wakatipu.school.nz/stationery

- wakatipu.school.nz/Lockers

Financial Support

- wakatipu.school.nz/awhina

Extracurricular

- wakatipu.school.nz/extracurricular

Sports

- sporty.co.nz/wakatipu

Facebook

> [School](#)

WakatipuHighSchoolQueenstown

> [Sports](#)

WakatipuHighSchoolSports

> [International Students](#)

International.wakatipu.high.school

> [WHS Alumni](#)

WakatipuhighschoolAlumni

> [WHS Foundation](#)

Wakatipuhfoundation

Instagram

> [School](#)

@wakatipuhighschool

> [Arts](#)

@whsartdepartment

> [Student Executive Team](#)

@wakatipustudents

Our cultural pattern was designed by the Maui design studio in consultation with our Rūnaka, Ōraka-Aparima. The resulting work is a tāonga - a treasure for the school. The cultural pattern incorporate four key elements: Poutama (various steps of learning and achievement), Koru (growth), Manu Feathers (cultural diversity) and Manaia (representing kaitiakitanga/guardianship).